

# ACUTE INPATIENT REHABILITATION UNIT

2015 Annual Report



HSHS  
**St. Elizabeth's**  
Hospital

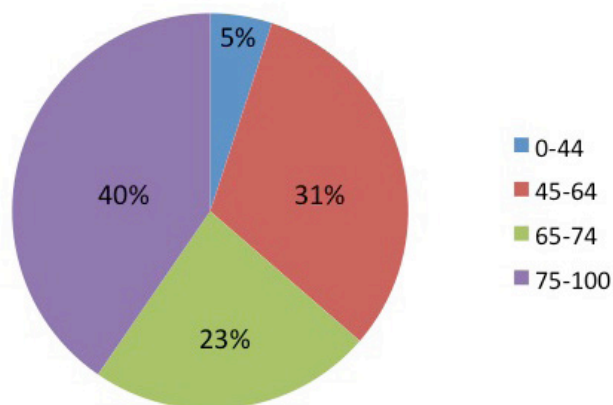
## PROVIDING OFF-THE-CHART CARE<sup>SM</sup> FOR ALL

We are pleased to present the annual report for the Inpatient Comprehensive Rehabilitation Unit at HSHS St. Elizabeth's Hospital for 2015. We continue to provide excellent rehabilitative services to the population of Southwestern Illinois. Our patients receive outstanding care and we strive to return them to their community. Working with our colleagues at the main hospital, we are able to provide the full spectrum of care for those in need.

We were privileged to serve 386 patients in our calendar year of January 1, 2015 to December 30, 2015.

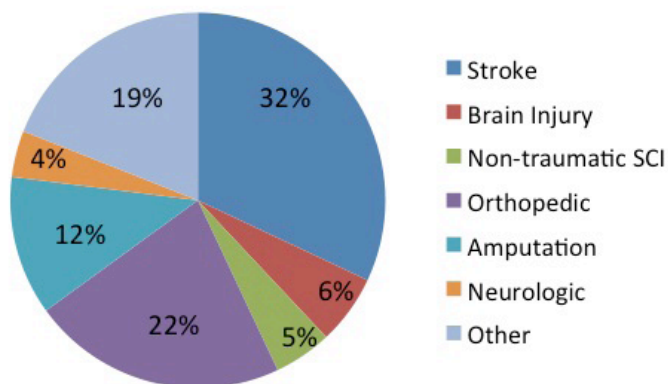
Our population's average age was 69 years old. The chart to the right notes the breakdown of ages served.

### Age Groups



We served a variety of diagnosis, as seen in the breakdown, with stroke as the largest.

### Diagnosis

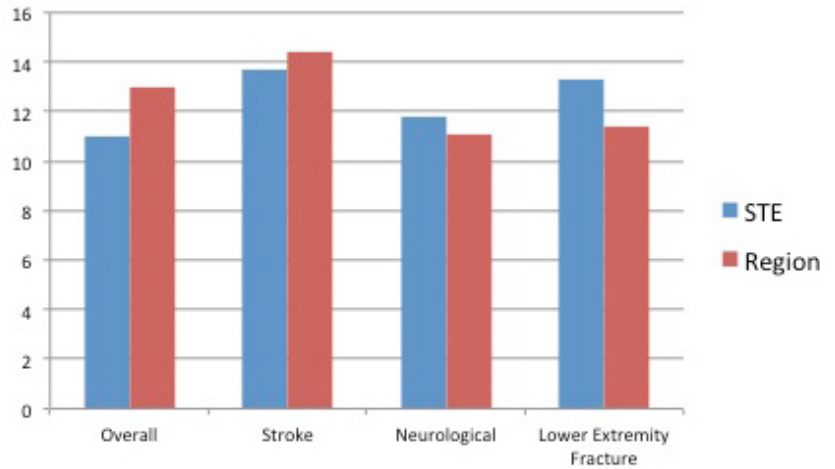


# 2015 ACHIEVEMENTS:

We measure our rehabilitative outcomes in a variety of ways. All of the data below was measured for the time period January 1, 2015 to December 31, 2015. Our data is collected by Uniform Data System (UDS) and is used in part to create national data benchmarks for rehabilitative care.

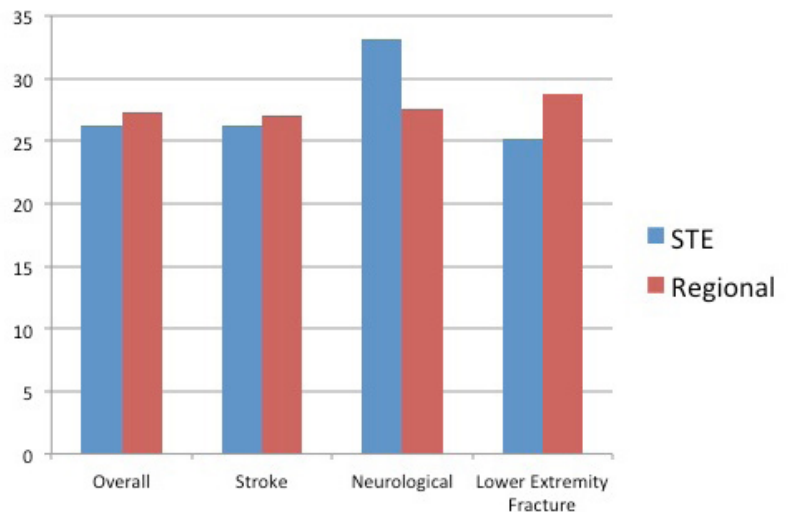
## LENGTH OF STAY 2015

Overall our patient's average length of stay was **11** days as compared to 13 for our region.



Another measure to the success of our patients is their overall functional gain. We measure the functional gain by using the Functional Independence Measure (FIM) instrument at admission and discharge. It is a nationally recognized measurement tool used to assess a person's ability to care for themselves in 18 areas including activities in self care, sphincter control, mobility, locomotion, communication and social interaction.

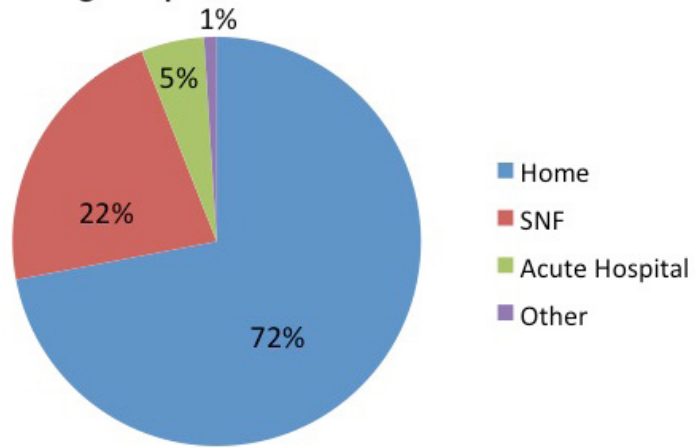
## FIM CHANGE 2015



We strive to help our patients return to their previous living conditions.

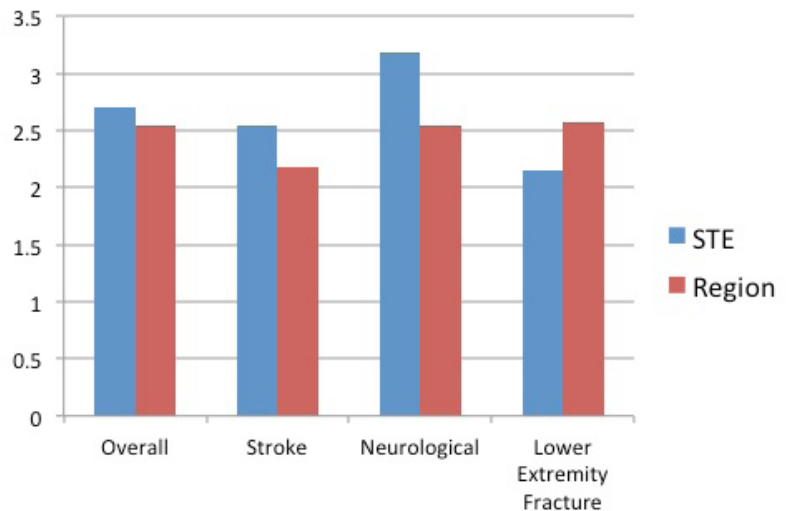
Over **72%** of our patients return home.

**Discharge Disposition**



**LENGTH OF STAY EFFICIENCY**

LOS Efficiency measures the functional change over the length of stay. January 1, 2015 to December 31, 2015.



**PATIENT SATISFACTION:**

<b>90 Day Follow-up Survey</b>	
<b>Prepared to go home</b>	93% Agree
<b>Pleased with their progress</b>	95% Agree

Our patient satisfaction scores with Press Ganey overall assessment score of 86.4 with 91.5% of our patients expressing they would recommend our services to others. To include our families more in our goal and discharge process, we have implemented a family rounds meeting with our team to ensure communication is open and ongoing,



## COMMUNITY OUTREACH:

The inpatient rehabilitation unit provides many opportunities in community outreach. The following are just a few:

- Sponsor the Stroke Support Group held in our facility every other month.
- Mentor students from multiple schools in all rehabilitation disciplines.
- Education of high school students on therapy professions
- Fall risk educational programs.
- Osteoporosis educational program.
- Volunteer at HSHS Mission Outreach center.
- Education of grade school students on the Rehab Program and healthy lifestyle.
- Volunteered in multiple Mission Integration activities including food drive, clothing drive, back pack and school items collection, adopt a family, etc.

## LOOKING AHEAD:

We are committed to provide excellent rehabilitative care to the Southwestern Illinois area. This commitment motivates us to continue to improve and adapt our services to the needs of our community. We continue to work closely with our sister hospitals and other hospitals in our community to provide rehabilitative services for our patients in their own community.

We continue to raise the bar in the quality of our care, the overall satisfaction of our services and the competency of our staff. A few of the goals for the next year include:

- Improve overall outcomes of the program to be in the top 25th percentile compared to our national benchmark.
- Improve employee satisfaction rates to be in the top 25th percentile as compared to our benchmark.
- Expand our services to meet the needs of our community by increasing our admissions by 5%.
- Expand community outreach opportunities to increase awareness of a healthy lifestyle and overall wellness.

It is an exciting time at St. Elizabeth's Hospital and its Rehab Unit. We are in the midst of planning and building a state-of-the-art new facility. The Rehab Unit will be an integral part of the new facility with an open concept, spacious room, and new and improved equipment.

It is our privilege to serve those who are in need of rehabilitative service.

Tom Dibadj, PT  
Director of Rehabilitation

## CODE OF ETHICS:

In maintaining an ethical environment for all, St. Elizabeth's Hospital is governed by::

- The Ethical & Religious Directives for Catholic Healthcare Services
- The American Hospital Association Patient Bill of Rights
- Numerous standards for The Joint Commission
- St. Elizabeth's Hospital Healthcare Ethics Committee Guidelines

## ACCREDITATION:

St. Elizabeth's Rehabilitation Unit is accredited by the Commission on Accreditation of Rehabilitation Facilities (CARF) to function as a Comprehensive Integrated Rehabilitation Program. St. Elizabeth's Rehabilitation Unit is one of the few accredited programs available in southern Illinois.



HSHS  
**St. Elizabeth's**  
Hospital

## Acute Inpatient Rehabilitation Unit

211 South Third Street, Belleville, IL  
618-234-2120 • [www.steliz.org](http://www.steliz.org)

Tom Dibadj, Director 618-234-2120, ext. 1512